



CHATTERTON | REES

15 Portman Square

, London, W1H 6LL

£1,495,000



1



1



1



C



# 15 Portman Square



## Description

A beautifully refurbished one-bedroom apartment on the prestigious Portman Square W1.

This stunning upper-floor residence has been exquisitely redesigned by 1.61 London, showcasing exceptional quality and contemporary design throughout. The result is a sophisticated home offering best-in-class living in the heart of Central London.

Set within the highly regarded Fifteen Portman Square, residents enjoy a full suite of premium amenities, including 24-hour porterage, passenger lifts, and exclusive access to the beautifully maintained private garden square.

Perfectly positioned between Marylebone and Mayfair, Portman Square provides immediate access to world-class restaurants, luxury boutiques, celebrated cultural venues, and the green expanses of Hyde Park, all just moments away.

- Lift & 24 Hour Concierge
- Newly Refurbished
- Long Lease
- Access to Private Garden Square
- 6th Floor
- Central Location

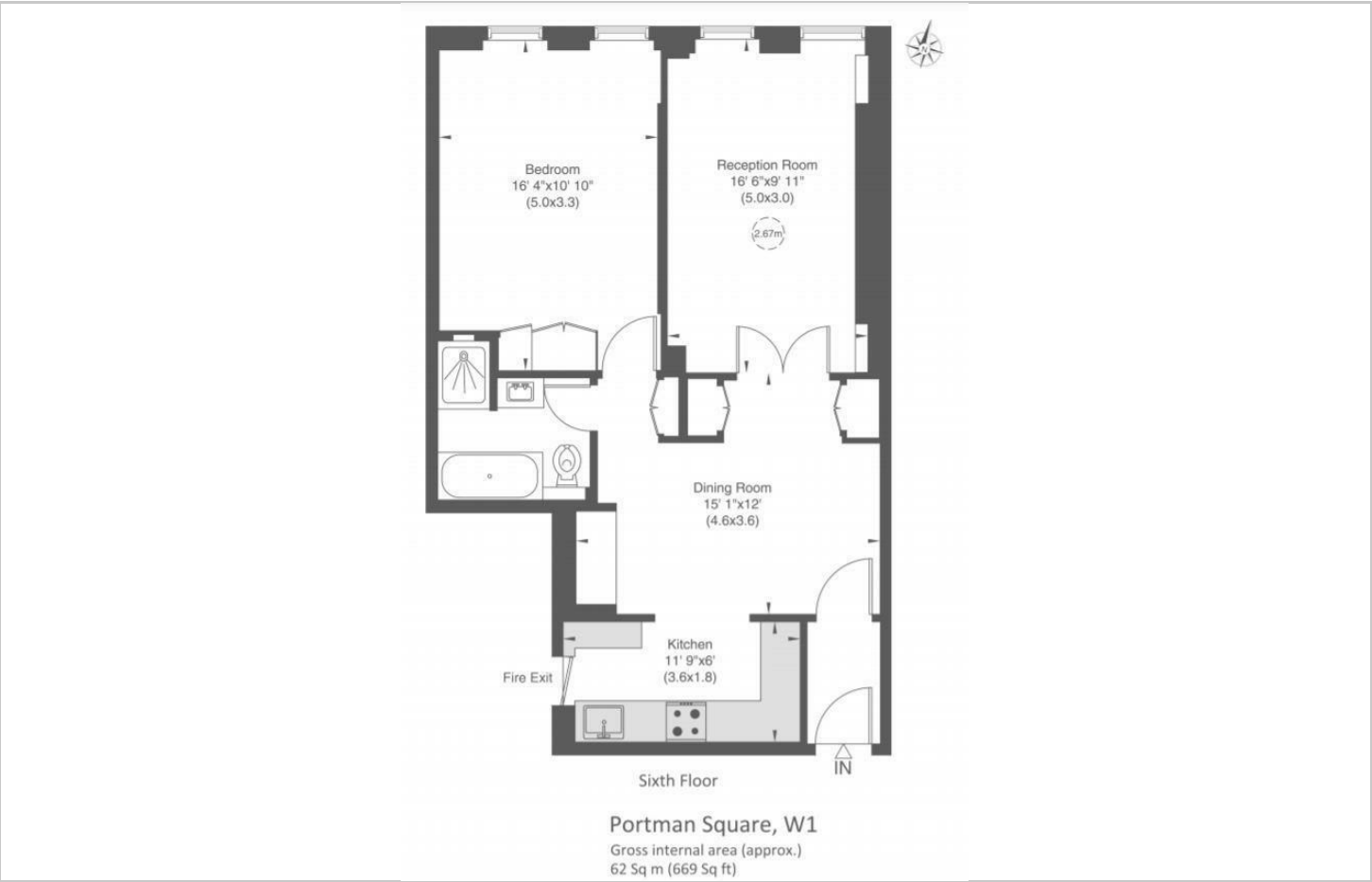




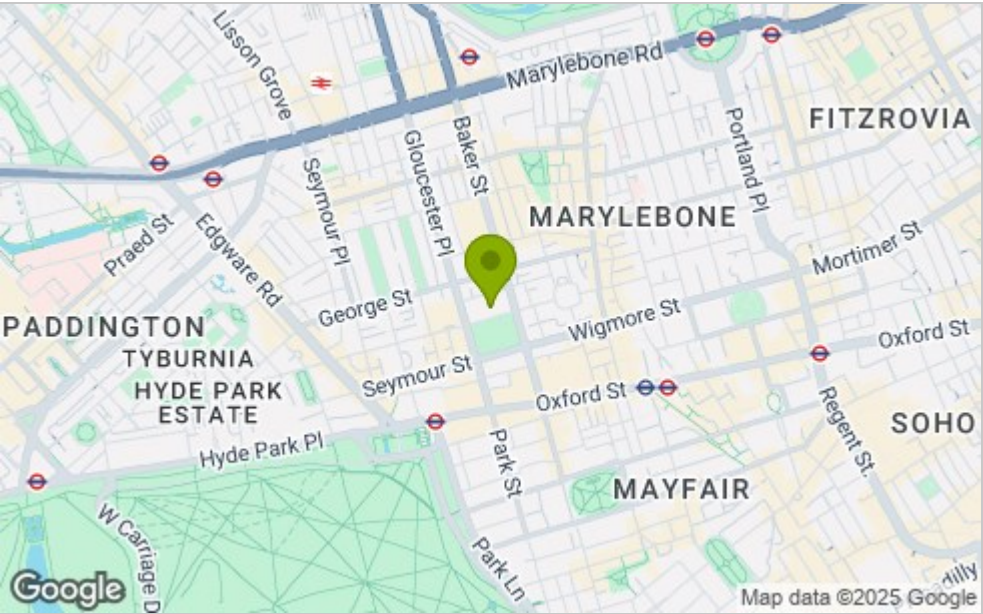




Floor Plan



Area Map



Viewing

Please contact our Chatterton Rees Office on 020 3780 0580 if you wish to arrange a viewing appointment for this property or require further information.

These particulars, whilst believed to be accurate are set out as a general outline only for guidance and do not constitute any part of an offer or contract. Intending purchasers should not rely on them as statements of representation of fact, but must satisfy themselves by inspection or otherwise as to their accuracy. No person in this firms employment has the authority to make or give any representation or warranty in respect of the property.

Energy Efficiency Graph

